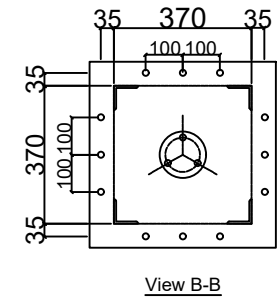
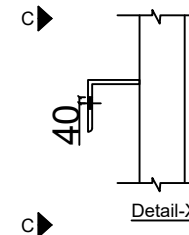
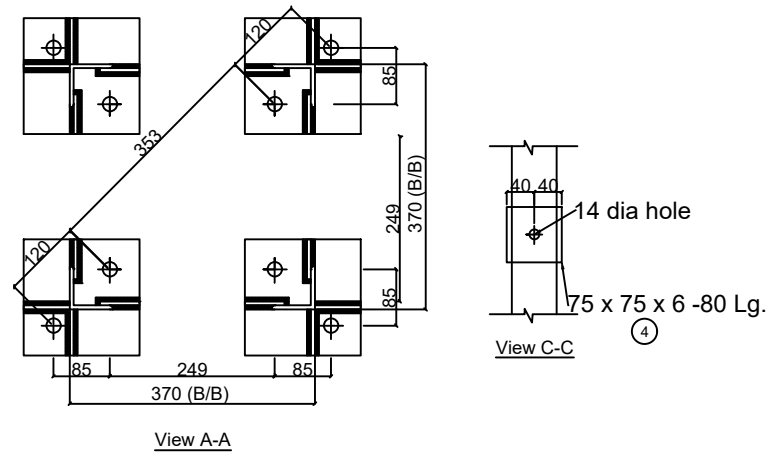
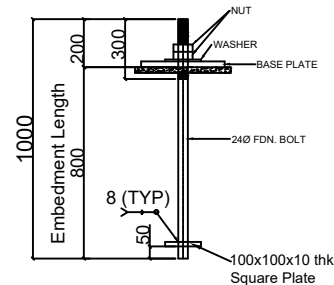
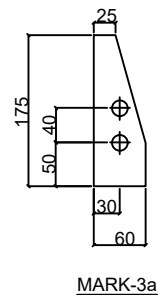
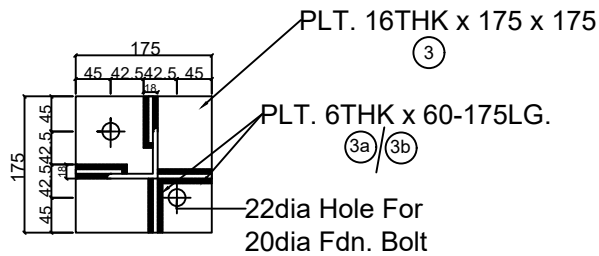


SI No.	Mark No.	Member	Section	Length IN MM	Qty./Set No.s	Unit Wt KG/M or KG/Sq	Wt/Pc Kgs	Wt/Set Kgs
1	LA-1	LEG	65x65x6	3172	2	5.8	18.398	36.8
2	LA-2	LEG	65x65x6	3172	2	5.8	18.398	36.8
3	LA-3	BASE PLT	16x175	175	4	125.6	3.847	15.39
4	LA-3a	STIFFENER	6x60	175	4	47.1	0.495	1.98
5	LA-3b	STIFFENER	6x60	175	14	47.1	0.495	6.93
6	LA-4	EARTH CLT	75x75x6	80	6	6.8	0.544	3.26
7	LA-5	BRACING	45x45x5	555	24	3.4	1.887	45.29
8	LA-5x	BRACING	45x45x5	555	4	3.4	1.887	7.55
9	LA-6	BRACING	45x45x5	350	24	3.4	1.19	28.56
10	LA-7	TOP SUPPORT	65x65x6	350	4	5.8	2.03	8.12
11	LA-8	TOP PLATE	12x500	500	1	94.2	23.55	23.55
TOTAL WEIGHT OF THE STRUCTURE EXCLUDING FASTENERS (IN KG):								214.23



Note:

1. All the dimensions are in mm.
2. The Mounting details shall be as per the approved equipment drawing.



DETAILS OF BASE PLATE

MARK-3a

20MM DIA FOUNDATION BOLT

DRAWING:-

**EQUIPMENT SUPPORT STRUCTURE
FOR 132 KV LA**